

IECEE

CB-SCHEME

OD-CB2027-Ed.2.2

OPERATIONAL & RULING DOCUMENTS

Use of Manufacturers' Testing Laboratories: General Principles

OD-CB2027-Ed.2.2

IEC - IECEE 2007 - Copyright

2007-09-04

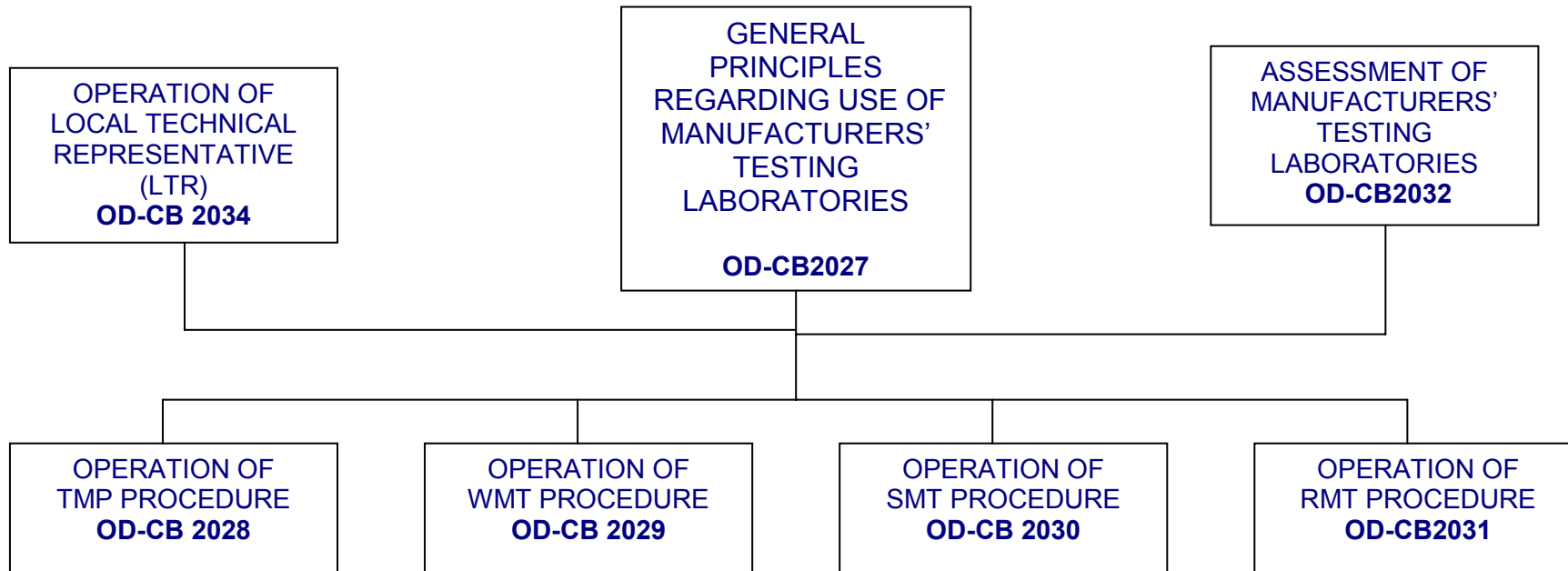
all rights reserved

Except for IECEE members and mandated persons, no part of this publication may be reproduced or utilized in any form or by any means, electronic or mechanical, including photocopying and microfilm, without permission writing from the publisher

IECEE Secretariat, 3, rue de Varembé, Geneva, Switzerland, Telefax : +41 22 919 0300, e-mail : pro@iec.ch



**FRAMEWORK FOR DOCUMENTATION COVERING THE USE
OF MANUFACTURERS' TESTING LABORATORIES**





**IEC System for Conformity Testing and Certification
of Electrotechnical Equipment and Components
CB Scheme**

Table of Comparison of Programmes for CBTL,TMP,WMT,SMT and RMT

Laboratory Type	CBTL	TMP	WMT	SMT	RMT
Testing Location	CBTL	Manufacturer	Manufacturer	Manufacturer	Manufacturer
Definitions (who is doing the work)	A laboratory successfully assessed within CB Scheme performs all necessary tests with own equipment in own facilities	A representative of an accepted CBTL, under the responsibility of its NCB performs the full test in a manufacturer's laboratory with its own or the manufacturer's equipment	A representative of an accepted CBTL, on the request of an NCB, witnesses all tests done by a manufacturer's laboratory which uses its own equipment	A representative of an accepted NCB or an accepted CBTL, on request of an NCB, supervises the quality management system and the laboratory testing processes and witnesses some part of each agreed testing program at a manufacturer's laboratory, which uses its own equipment.	A representative of an accepted NCB or an accepted CBTL, on request of an NCB, assesses initially and on an on-going basis the capability and expertise of the manufacturer's laboratory according to ISO/IEC 17025 and any other relevant IECEE Operational Documents, including the laboratory's quality management system and the laboratory's testing processes. RMT may be supervised by a registered LTR under the responsibility of a NCB. An LTR may conduct initial assessment only if employed within the same corporate.
Signature: Tested by *	CBTL	CBTL	Manufacturer	Manufacturer	Manufacturer
Signature: Witnessed by*	none	none	NCB or CBTL	none	none



**IEC System for Conformity Testing and Certification
of Electrotechnical Equipment and Components
CB Scheme**

Laboratory Type	CBTL	TMP	WMT	SMT	RMT
Signature: Authorized (Reviewed and Approved) by*	CBTL	CBTL	NCB or CBTL	Manufacturer	Manufacturer
Signature: Supervised by*	none	none	none	NCB or CBTL by delegation	NCB or CBTL by delegation
Signature: CB Certificate	NCB	NCB	NCB	NCB	NCB
Presence at each individual project	Yes (100 %)	Yes (100 %)	Yes (100 %)	Some part of each product- testing program must be witnessed on site.	Supervision according to clause 10 of OD2031
Equipment Requirements	Fully equipped to category(ies) / standard(s) except for allowed subcontracting identified as "s" in the CTL Lists	Fully equipped to category(ies) / standard(s) / part(s) of standard(s)	Fully equipped to category(ies) / standard(s) / part(s) of standard(s)	Fully equipped to category(ies) / standard(s) / part(s) of standard(s)	Fully equipped to category(ies) / standard(s) / part(s) of standard
Assessment/Re- Assessments/Follow up Assessments (for CBTL)/ Follow-up auditing (for Manufacturer) (See OD CB 2032 § 2.3)	IECEE Peer Assessment Programme	Assessment by NCB based on OD-CB2028 within scope of arrangement	Assessment by NCB or by a representative of an accepted CBTL, on the request of an NCB, based on OD-CB2029 within scope of arrangement	Assessments by NCB, or by a representative of an accepted CBTL, on the request of the NCB, based on OD-CB2030 within scope of arrangement	Assessments by NCB(s) based on CB- OD2032 and any other relevant IECEE Operational Documents, including the laboratory's quality management system and the laboratory's testing processes,



**IEC System for Conformity Testing and Certification
of Electrotechnical Equipment and Components
CB Scheme**

Laboratory Type	CBTL	TMP	WMT	SMT	RMT
					within scope of arrangement. RMTLs are subjected to a re-assessment every three years carried out by an assessment team composed of one assessor from the responsible NCB and one Lead Assessor appointed by the IECEE Secretariat
Relationship between NCB and operator of laboratory	Ownership or technical control contract with one or more NCB(s) in different category(ies) according to IECEE 01 / 02 and ISO/ IEC Guide 65	Agreement with more than one NCB is possible TMPL shall not be permitted to participate for more one NCB for the same product model	Agreement with more than one NCB is possible WMTL shall not be permitted to participate for more one NCB for the same product model	Agreement with more than one NCB is possible SMTL shall not be permitted to participate for more one NCB for the same product model	Agreement with more than one NCB is possible RMTL shall not be permitted to participate for more one NCB for the same product model
Agreement between NCB, CBTL and MTL	An agreement between NCB and CBTL(s) is required if different legal entities is required	An Agreement between NCB and MTL and CBTL is required. (See OD 2028)	An Agreement between NCB and MTL and CBTL is required. (See OD2029)	An Agreement between NCB and MTL and CBTL is required. (See OD2030)	An Agreement between NCB and MTL and CBTL is required. (See OD2031)
Registration of the MTL	OD-CB 2003 « List of	Yes	Yes	Yes	Yes



**IEC System for Conformity Testing and Certification
of Electrotechnical Equipment and Components
CB Scheme**

Laboratory Type	CBTL	TMP	WMT	SMT	RMT
Contract and the LTR contact(if applicable) with the IECCE Secretariat	Participants »				
Supervision / Training	Through the responsible NCB(s) according to scope of operation	Through respective responsible NCB(s)	Through respective responsible NCB(s)	Through respective responsible NCB(s)	Through respective responsible NCB(s)
Participation in CMC Meeting	Yes, through Member Body representation	No	No	No	No
Participation in CTL Meeting	Yes	On voluntary basis	On voluntary basis	On voluntary basis	On voluntary basis
Participation in CB Proficiency Testing Program	Required	Not required under the CTL PTP program, required under the responsibility of the relevant NCB	Not required under the CTL PTP program, required under the responsibility of the relevant NCB	Required may be coordinated when multiple NCBs are involved)	Required (may be coordinated when multiple NCBs are involved)

*NB: Signing persons shall be chosen appropriately in order to avoid any conflict of interest.



GENERAL PRINCIPLES COVERING THE USE OF MANUFACTURERS' TEST LABORATORIES IN THE CB SCHEME

1. INTRODUCTION

1.1 Many manufacturers who use the IECEE CB Scheme have capable test laboratories in terms of personnel, facilities, and equipment, for testing the types of product for which they have responsibility for design, development, and production. In recognition of the market needs to utilise these facilities, procedures have been established for obtaining CB Test Certificates under controlled conditions. These procedures are an alternative to testing at a CBTL.

1.2 Four different Procedures have been developed for using a manufacturer's test facility:

Case A: Testing at Manufacturer's Premises (TMP) Procedure (see OD 2028)

Case B: Witnessed Manufacturer's Testing (WMT) Procedure (see OD 2029)

Case C: Supervised Manufacturer's Testing (SMT) Procedure (OD 2030)

Case D: Recognised Manufacturer's Testing (RMT) Procedure (OD 2031)

The above cases shall be considered as a whole to be a progression from full control of testing by a CBTL to full confidence in the capability of the manufacturer's laboratory.

2. REFERENCES

All the following documents have to be used in conjunction with the above mentioned ODs: IECEE 02, ISO/IEC 17025, Guide 65, Applicable IECEE ODs, CTL Decisions, Applicable ACAG decisions.

3. DEFINITIONS

3.1 CB Testing Laboratory (CBTL): A laboratory independent of manufacturing interests that has been recognised within the CB Scheme to test specified categories of products and to issue CB Test Reports.

3.2 Testing at Manufacturer's Premises Laboratory (TMPL): A manufacturer's laboratory being used by CBTL staff.

3.3 Witnessed Manufacturer's Testing Laboratory (WMTL): A manufacturer's laboratory being used for 100% Witnessed Testing by the NCB or, at the request of the NCB, by a CBTL.



IEC System for Conformity Testing and of Electrotechnical Equipment and Components CB Scheme

3.4 Supervised Manufacturers Testing Laboratory (SMTL): A manufacturer's laboratory being used by an NCB to conduct agreed testing within categories of products for which the manufacturer has design and production responsibility, generally with supervision of tests and quality processes.

3.5 Recognised Manufacturer's Testing Laboratory (RMTL): A manufacturer's laboratory being used by a NCB to conduct agreed testing within categories of products for which the manufacturer has design and production responsibility, generally with supervision of quality processes.

3.6 Local Technical Representative (LTR): A specified, competent and contracted person, operating under the responsibility of an NCB for testing at a manufacturer's laboratory, who locally carries out the required TMP, WMT, SMT and RMT activities according to **OD-CB 2034**, OD-CB 2027, OD-CB 2028, OD-CB 2029, OD-CB 2030 and OD-CB 2031 as applicable.

3.7 Ownership of Manufacturer's Testing Laboratory (MTL): an MTL is a testing laboratory that is owned by a "Manufacturer" (as defined in IECEE 02) who has Full responsibility for continued compliance of the MTL with the relevant requirements of ISO/IEC 17025 and IECEE Operational Documents.

Note: Examples for the purpose of the IECEE Schemes:

- a) *an outsourced (third party) laboratory is not permitted to operate as a MTL as detailed in Decision Sheet AAG/497/DSH.*
- b) *an MTL is not permitted to carry out testing of products made by other manufacturers as detailed in Decision Sheet AAG/648/DSH.*

4. GENERAL PRINCIPLES APPLICABLE TO ALL THE PROCEDURES LISTED IN CLAUSE 1.2

All testing carried out at Manufacturer's testing Laboratories shall be in accordance to the relevant requirements of ISO/IEC 17025 and the applicable IECEE procedures and decisions. Test results obtained shall be from a sample representative of production.

The NCB shall have the right to conduct any test prior to issuing a CB Test Certificate.

The NCB shall only allow Manufacturers Testing for specific categories of equipment for which the manufacturer has a proven capability.

A CB Test Certificate issued by the NCB obtained by Manufacturers Testing shall have the same status as one obtained from a CBTL.

A manufacturer permitted to use Manufacturers Testing shall not use this fact for promotional or advertising purposes.

The Secretary of the IECEE shall maintain and publish a register of those manufacturers participating and the categories of product involved.